

SAILING INSTRUCTIONS

Open Dutch Championship

Yngling and Sailhorse

Organized by Koninklijke Watersportvereniging Sneek (KWS)

and the Yngling Club Holland (YCH) with the Sailhorse Sailing Club (SSC)

in conjunction with the Royal Netherlands Sailing Association (RNSA)

from 5 September up to and including 7 September 2014

location: Stavoren (NL)

1. RULES

- 1.1 The regatta will be governed by the rules as defined in *The Racing Rules of Sailing*.
- 1.2 The 'Rules for Championships Sailing and Windsurfing' will apply.
- 1.4 For the Yngling Class, the Yngling Championship Rules will apply.
- 1.5 If there is a conflict between languages the English text will take precedence.
- 1.6 Every person on board who has its domicile in the Netherlands shall have the appropriate license.

2. NOTICES TO COMPETITORS

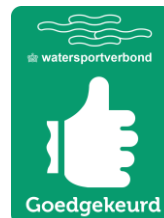
Notices to competitors will be posted on the official notice board(s) located at the regatta office. The regatta office is situated at the Marina Stavoren Buitenhaven. Suderstrand 30, 8715 HP Stavoren.

3. CHANGES TO SAILING INSTRUCTIONS

Any change to the sailing instructions will be posted before 09.00 on the day it will take effect, except that any change to the schedule of races will be posted by 20.00 on the day before it will take effect.

4. SIGNALS MADE ASHORE

- 4.1 Signals made ashore will be displayed at the flagpole near the regatta office.
- 4.2 When flag AP is displayed ashore, '1 minute' is replaced with 'not less than 45 minutes' in the race signal AP.
- 4.3 Flag D with one sound means 'the warning signal will be made not less than 30 minutes after flag D is displayed. Boats are requested not to leave the harbour until this signal is made'.



5 SCHEDULE OF RACES

5.1 Friday 05/09/2014

Class

Yngling Warning signal for first race 11:35

Saturday 06/09/2014

Class

Sailhorse Warning signal for first race 11:25

Yngling Warning signal for first race 11:35

Sunday 07/09/2014

Class

Sailhorse Warning signal for first race 10:55

Yngling Warning signal for first race 11:05

5.2 Number of races:

<u>Class</u>	<u>Number of races</u>	<u>Max. races per day</u>
Yngling	9 (3-3-3)	4
Sailhorse	6 (3-3)	4

One extra race per day may be sailed, provided that the series does not become more than one race ahead of schedule.

5.3 The scheduled time of the warning signal for the first race each day is mentioned in 5.1

5.4 To alert boats that a race or sequence of races will begin soon, an orange flag will be displayed with one sound for at least four minutes before a warning signal is displayed.

5.5 On the last day of the regatta no warning signal will be made after 15.00 hrs.

6 CLASS FLAGS

Class flags will be class insignia on the following background:

<u>Class</u>	<u>Insignia colour</u>	<u>Flag background colour</u>
Yngling	Blue	White
Sailhorse	Black	Yellow

7 RACING AREAS

Attachment A shows the location of racing area.

8 THE COURSE

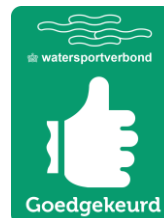
The diagram in Attachment B shows the course, including the approximate angles between legs, the order in which marks are to be passed, and the side on which each mark is to be left.

9 MARKS

9.1 Marks of the course will be yellow cylindrical buoys with arbitrary even numbers.

9.2 The starting marks will be orange/red buoys.

9.3 The finishing marks for the Yngling class will be between the marks of the starting line. The finishing marks for the Sailhorse class will be a blue buoy and a blue flag on the race starting vessel.



9.4 A race committee boat signalling a change of a leg of the course is a mark as provided in instruction 12.2.

10 Reserve

11 THE START

11.1 Races will be started by using RRS 26 with the warning signal given 5 minutes before the starting signal.

11.2 The starting line will be between the marks of the starting line.

11.3 Boats whose warning signal has not been made shall avoid the starting area.

11.4 A boat starting later than 4 minutes after her starting signal will be scored Did Not Start. This changes rule A4 and A5.

11.5 If flag U has been displayed as the preparatory signal, no part of a boat's hull, crew, or equipment shall be in the triangle formed by the ends of the starting line and the first mark during the last minute before her starting signal. If a boat breaks this rule and is identified, she shall be disqualified without a hearing but not if the race is restarted or resailed or postponed or abandoned before the starting signal. This changes rule 26.

11.6 When an individual recall is given, flag "X" will be displayed and repeated horn signals will be given. This changes rule 29.1.

12 CHANGE OF THE NEXT LEG OF THE COURSE

12.1 To change the next leg of the course, the race committee will move the original mark (or the finishing line) to a new position.

12.2 Except at a gate, boats shall pass between the race committee boat signalling the change of the next leg and the nearby mark, leaving the mark to port and the race committee boat to starboard. This changes rule 28.1.

13 THE FINISH

The finishing line for the Yngling class will be between a orange/red buoy on starboard-end and a orange/red buoy on port-end.

The finishing line for the Sailhorse class will be between a blue buoy on starboard-end and a blue flag on the starting vessel.

14 PENALTY SYSTEM

14.1 Reserve

14.2 For the Yngling class rule 44.1 is changed so that the Two-Turns Penalty is replaced by the One-Turn Penalty.

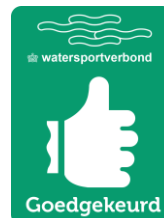
15 TIME LIMITS AND TARGET TIMES

15.1 Time limits are as follows:

<i>Time limit Mark 1</i>	<i>time limit</i>	<i>target time</i>
30 minutes	90 minutes	60 minutes

If no boat has passed Mark 1 within the Mark 1 time limit the race will be abandoned.

15.2 Failure to meet the target time will not be grounds for redress. This changes rule 62.1(a).



- 15.3** Boats failing to finish within 20 minutes after the first boat sails the course and finishes will be scored Did Not Finish without a hearing. This changes rules 35, A4 and A5.

16 PROTESTS AND REQUESTS FOR REDRESS

- 16.1** Protest forms are available at the regatta office. Protests shall be delivered there within the protest time limit.
- 16.2** The protest time limit is 60 minutes after the last boat has finished the last race of the day or the race committee signals no more racing today, whichever is later.
- 16.3** Notices will be posted within 15 minutes of the protest time limit to inform competitors of hearings in which they are parties or named as witnesses. Hearings will be held in the jury room, located at or near the regatta office.
- 16.4** Notices of protests by the race committee or protest committee will be posted to inform boats under rule 61.1(b).
- 16.5** reserve
- 16.6** Breaches of instructions 11.3, 18, 21, 23 ,24 en 27 will not be grounds for a protest by a boat. This changes rule 60.1(a). Penalties for these breaches may be less than disqualification if the protest committee so decides.
- 16.7** On the last day of the regatta a request for reopening a hearing shall be delivered
- (a) within the protest time limit if the party requesting reopening was informed of the decision on the previous day;
 - (b) no later than 30 minutes after the party requesting reopening was informed of the decision on that day.
- This changes rule 66.
- 16.8** On the last scheduled day of racing a request for redress from a protest committee decision shall be delivered no later than 30 minutes after the decision was posted. This changes rule 62.2.
- 16.9** A request for a decision in writing has to be delivered within one hour after the decision is given verbally. This changes rule 65.2.
- 16.10** A request for correction of an error in the published results has to be delivered within the protest time limit of the last scheduled day of racing or within 60 minutes after posting of the results, if this is later. When the request is not granted, the protest time limit is 60 minutes after the boat is informed that the request is not granted. This changes rule 62.2.

17 SCORING

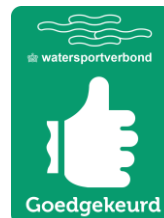
- 17.1** Four races are required to be completed to constitute a series.
- 17.2**
- (a) When fewer than 5 races have been completed, a boat's series score will be the total of her race scores.
 - (b) When 5 or more races have been completed, a boat's series score will be the total of her race scores excluding her worst score.

18 SAFETY REGULATIONS

A boat that retires from a race shall notify the race committee as soon as possible.

19 REPLACEMENT OF CREW OR EQUIPMENT

- 19.1** Substitution of competitors will not be allowed without prior written approval of the race committee.



- 19.2** Substitution of damaged or lost equipment will not be allowed unless approved by the race committee. Requests for substitution shall be made to the committee at the first reasonable opportunity.

20 EQUIPMENT AND MEASUREMENT CHECKS

A boat or equipment may be inspected at any time for compliance with the class rules and sailing instructions. On the water, a boat can be instructed by the race committee or a measurer to proceed immediately to a designated area for inspection.

21 EVENT ADVERTISING

Boats shall display advertising if supplied by the organizing authority which shall be attached according to the instructions given at registration.

22 OFFICIAL BOATS

Official boats will signal the KWS flag or an orange flag with the text “KWS Standby”.

23 SUPPORT BOATS

- 23.1** Team leaders, coaches and other support personnel shall stay outside areas where boats are racing from the time of the preparatory signal until all boats have finished or retired or the race committee signals a postponement, general recall or abandonment.

24 TRASH DISPOSAL

Trash may be placed aboard support and race committee boats. A penalty for breaking rule 55 may be less than disqualification if the protest committee so decides. This changes rule 64.1.

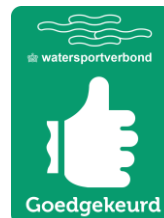
25 TRACKING DEVICES

- 25.1** When the Organising Authority provides (satellite) tracking devices or cameras to entrants in the race, these shall be fitted as instructed and left turned on for the duration of the race. Every effort shall be made to ensure that the devices function as intended.
A boat shall not be given redress based on a claim involving this equipment. This changes RRS 62.1
- 25.2** Instructions about the procedure for collecting and returning these devices and how to fit them, will be given at registration and also will be posted on the notice board.

26 Reserve

27 RADIO COMMUNICATION

A boat shall neither make radio transmissions while racing nor receive radio communications not available to all boats. This restriction also applies to mobile telephones and other electronic devices. VHF will only be used for safety communication.



28 PRIZES

- 28.1** The responsible person of the winning boat of the Open Dutch Championship acquires the title "Dutch Champion 2014 "
- 28.2** The crew of the winning boat receive the gold coloured medals and the Blue Pennants of the RNSA.
- 28.3** The second and third finishing crews are rewarded by the medals for second and third place.
- 28.4** For the Yngling class other prizes will be given as follows:
- The first 5 boats in the overall ranking will receive prizes from the Yngling Class.
 - The winning Yngling team will receive a perpetual cup.
 - The youth team, consisting of youth as described in the Yngling Championship Rules, with the highest overall ranking will receive a perpetual prize.

29 DISCLAIMER OF LIABILITY

Competitors participate in the regatta entirely at their own risk. See rule 4, Decision to Race. The organizing authority will not accept any liability for material damage or personal injury or death sustained in conjunction with or prior to, during, or after the regatta.

30 INSURANCE

Each participating boat shall be insured with valid third-party liability insurance with a minimum cover of Euro 1.500.000 per event or the equivalent.

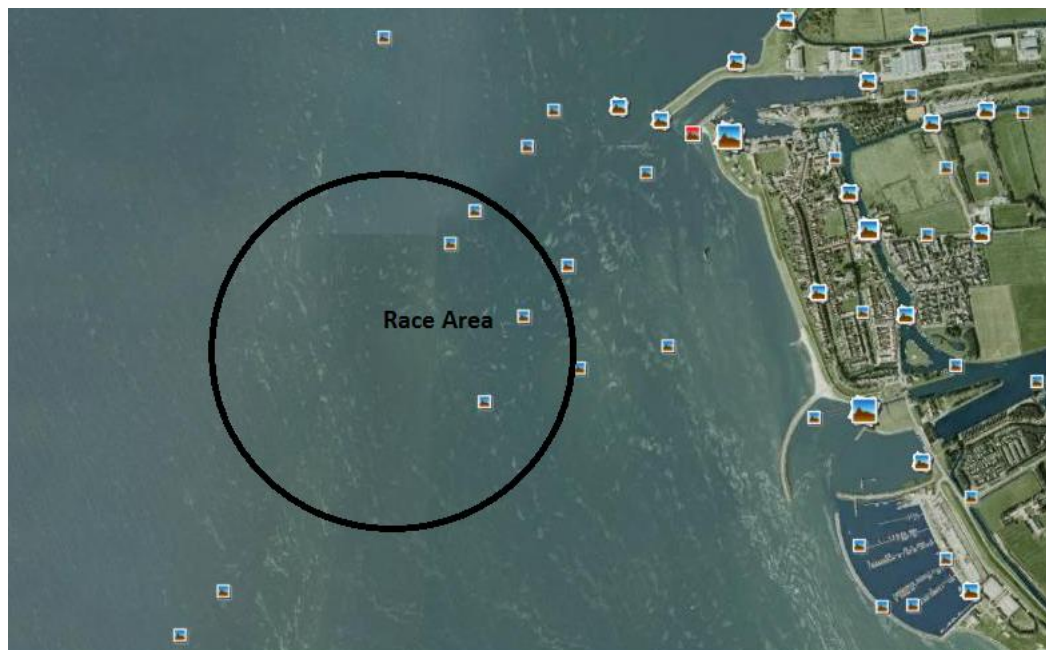
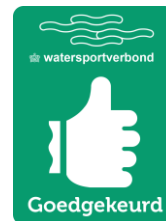
31 ORGANISATION

The race officer is: Theo de Groot
The chairman of the protest committee is: Bauke Oostenbrug

ATTACHMENT A

THE RACING AREA

The race area will be the IJsselmeer west of Stavoren, approx 1Nm from Buiten Haven Stavoren.



ATTACHMENT B

THE COURSE

Yngling:

Start – 1 Port – 4 Gate – 1 Port – Finish

Sailhorse:

Start – 1 Port – 2 Port – 3 Port – 2 Port – 3 Port – 5 Port – Finish

